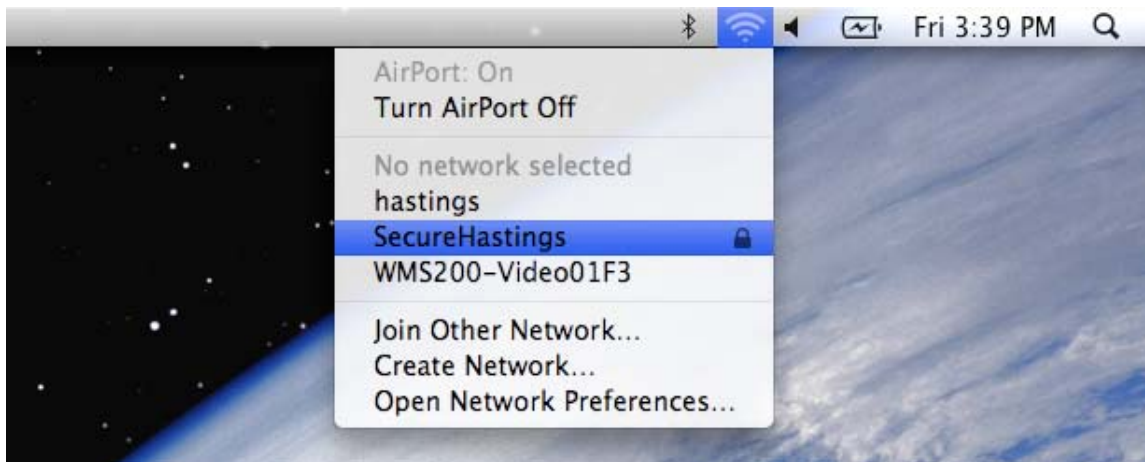


Mac OS X Leopard instructions for connecting to the SecureHastings wireless network September 19, 2008

1. Turn Airport On: Click the Airport Icon at the top of the screen. Click Turn Airport On



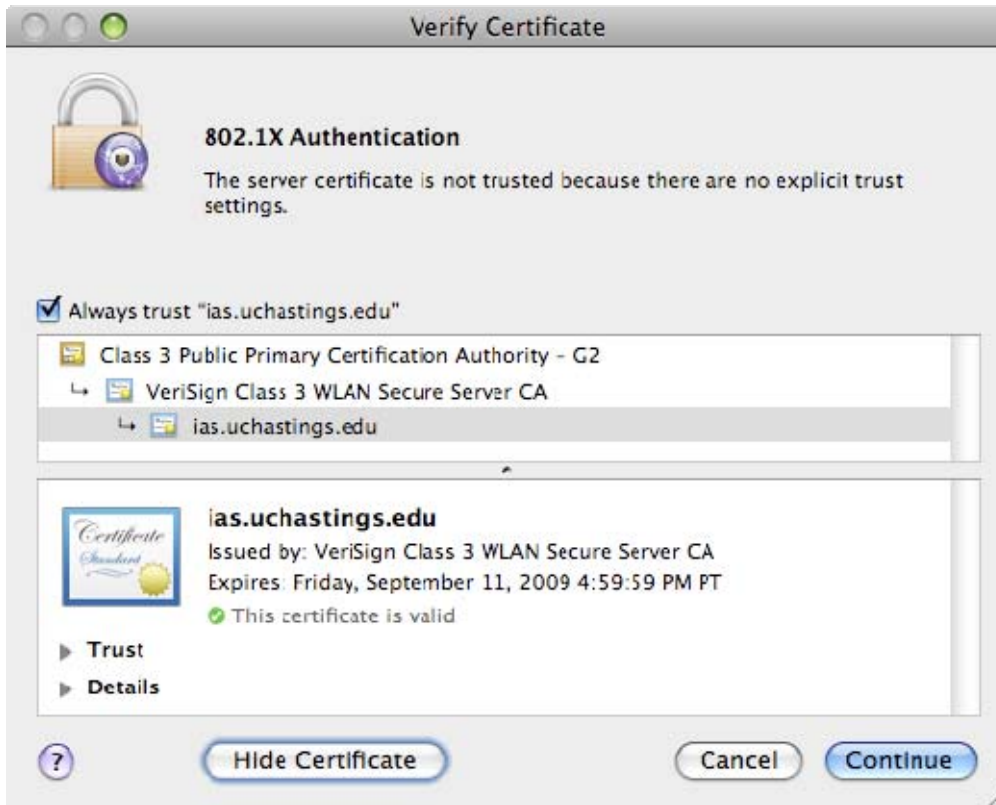
2. Click on the network SecureHastings



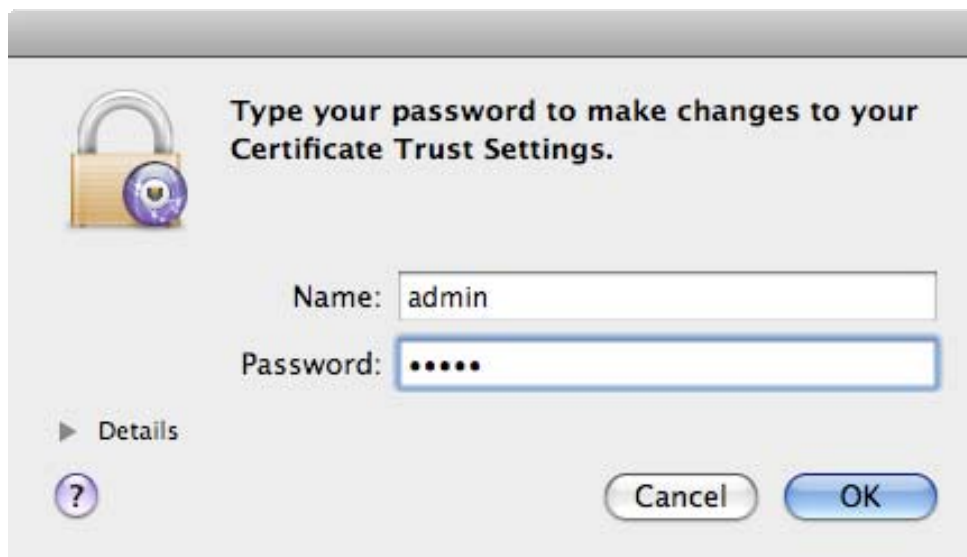
3. When Prompted by Verify Certificate click Show Certificate



4. Click the Always trust “ias.uchastings.edu” check box and click continue.



5. Type in your computer's name and password and click ok



- When prompted, enter your email username and password.



The network "SecureHastings" requires a password.

User Name:

Password:

802.1X:

Remember this network

- The dialog box will change. Be sure to enter your username and password
Security: choose WPA Enterprise or WPA2 Enterprise
CHECK: Remember this network
Click: Add



Enter the name of the network.

Enter the name of the network you want to add, and then enter the password if necessary. You can also click Show Networks to see a list of available networks.

Network Name:

Security:

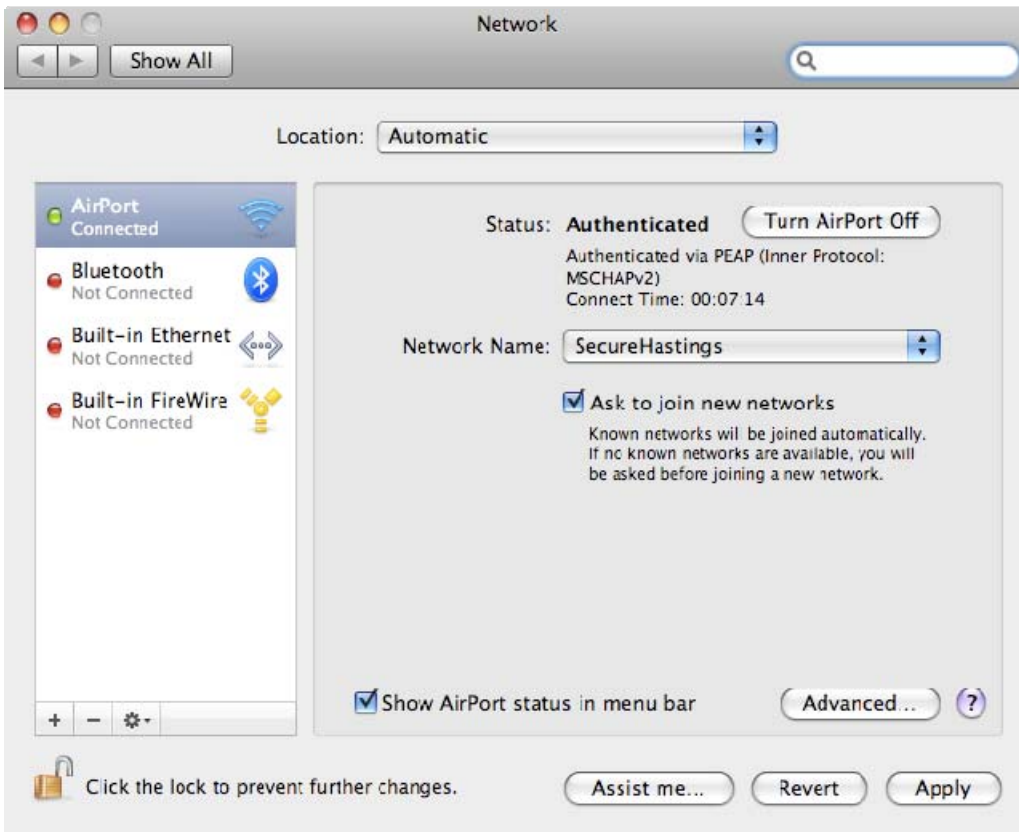
User Name:

Password:

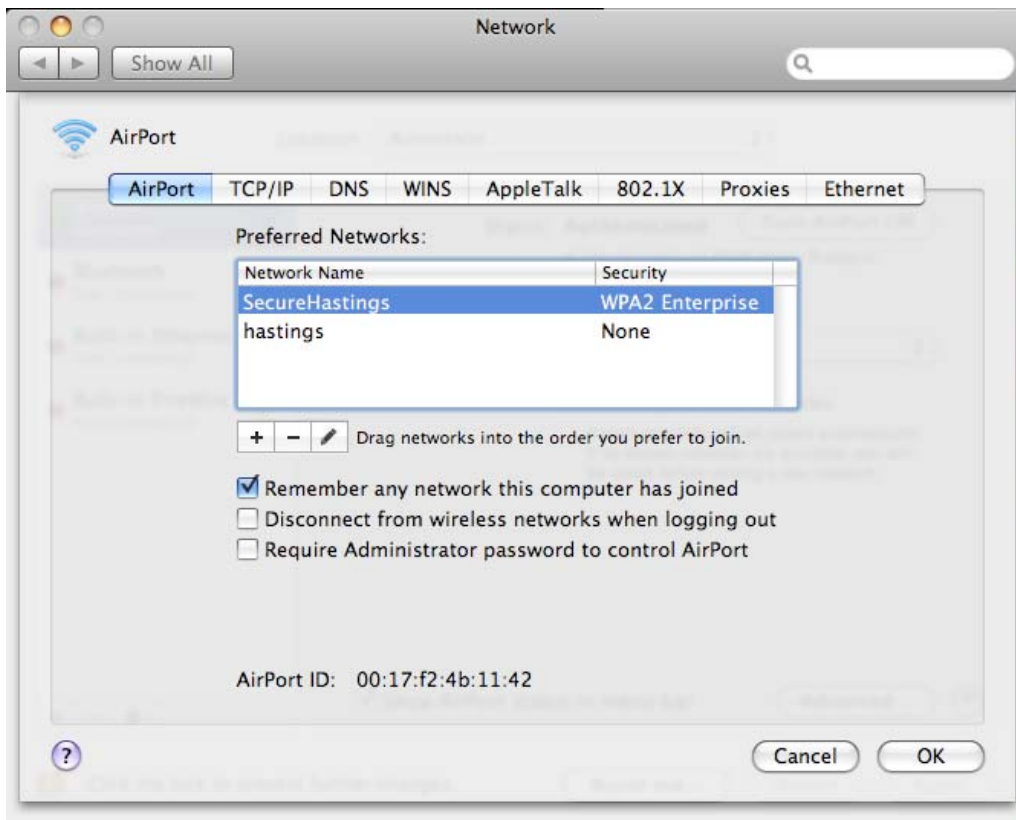
802.1X:

Remember this network

8. On the Network Properties click the Advanced... button.



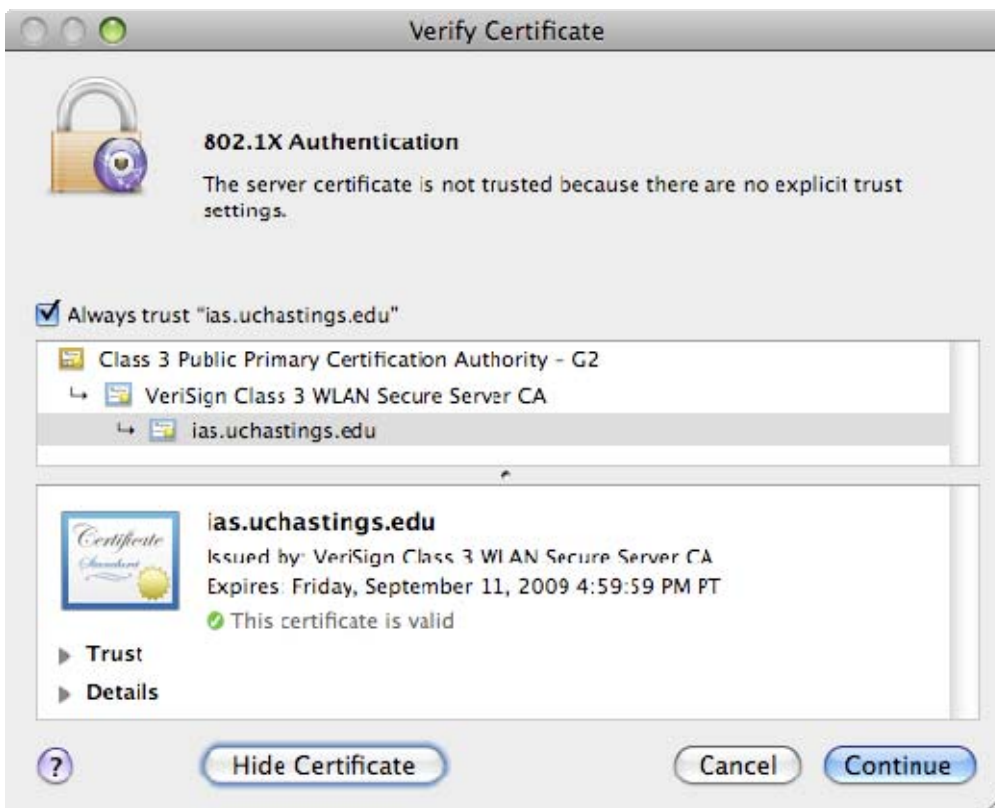
9. Drag the SecureHastings preferred network to the top of the preferred network list. Click OK and then click Apply



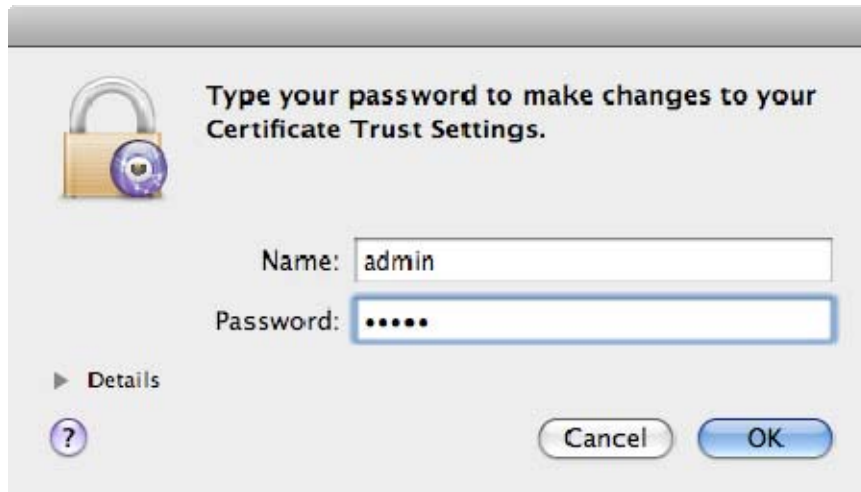
10. You will be prompted by the Verify Certificate
Click: Show Certificate



11. Click the always trust button and click continue



12. Type in your computer's name and password and click ok



You are now connected to the SecureHastings wireless network. Open Safari or you preferred Internet Browser to browse the Internet.

If you have any questions email the IT department at: helpdesk@uchastings.edu
Or call the IT department at: 415-581-8802
and leave a message