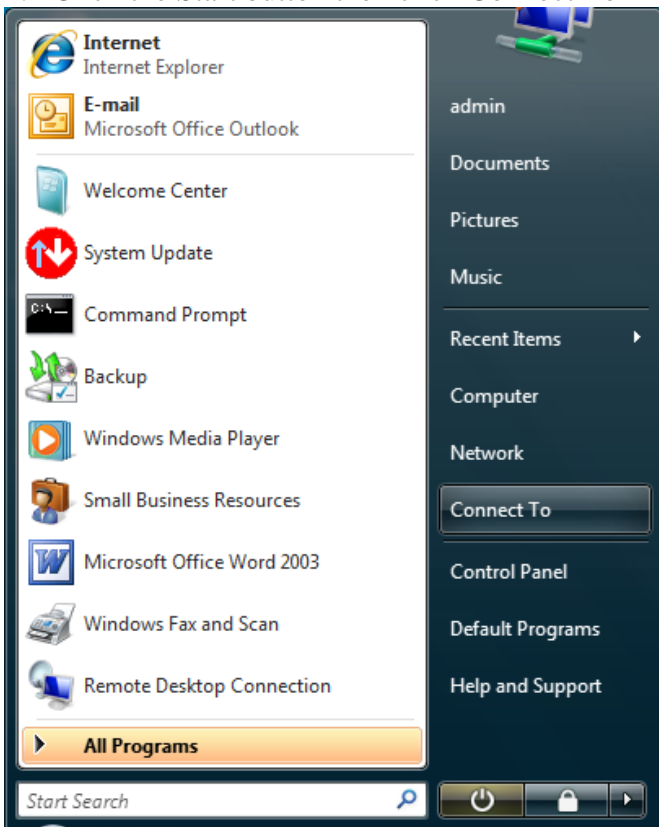
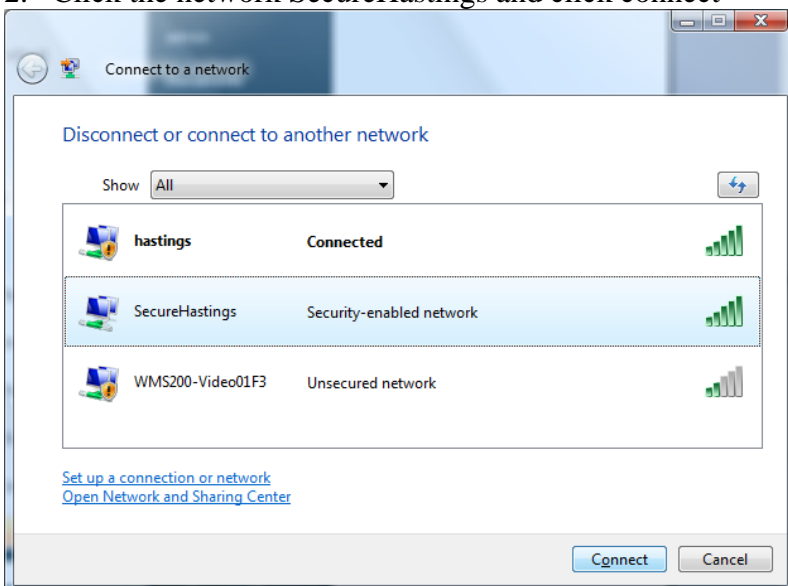


# Windows Vista instructions for connecting to SecureHastings wireless network September 19, 2008

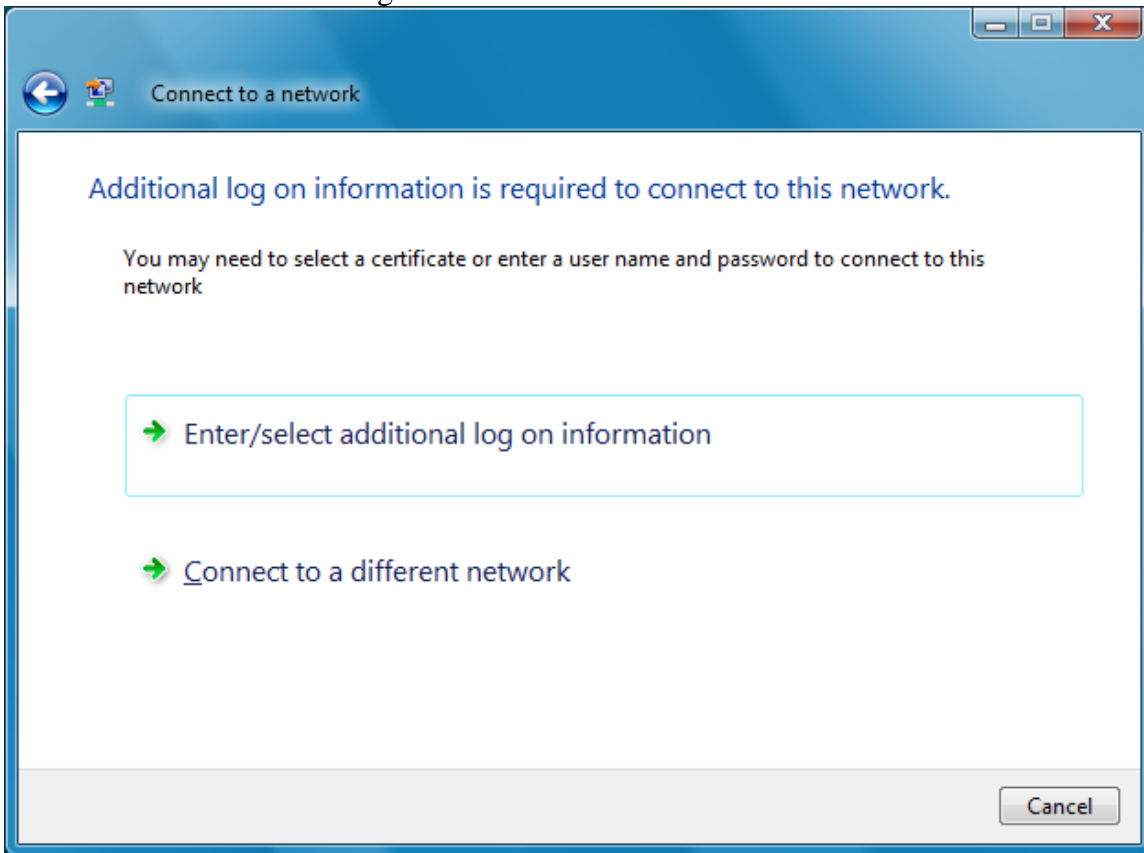
1. Click the Start button then click Connect To



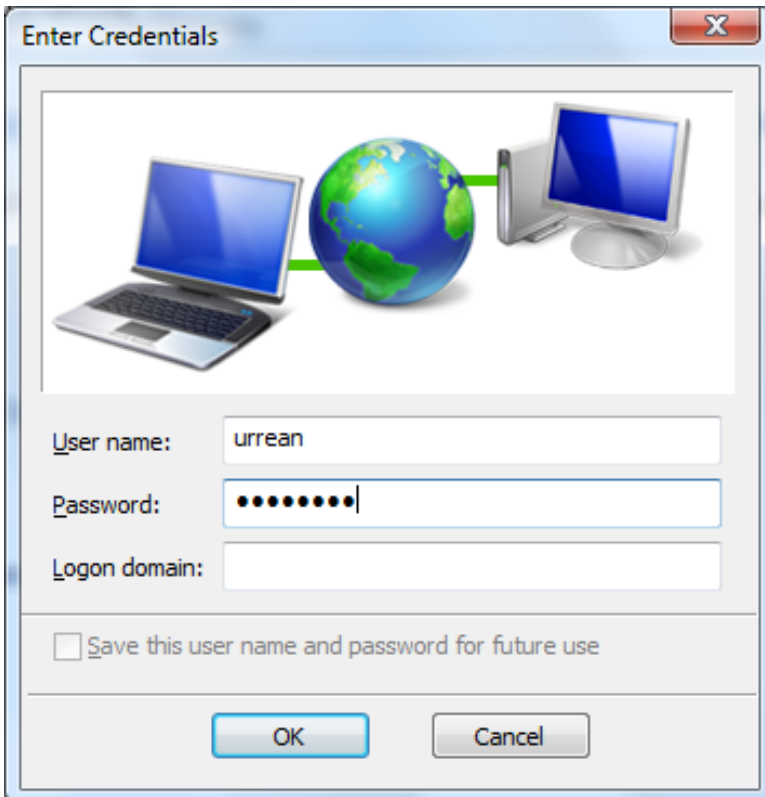
2. Click the network SecureHastings and click connect



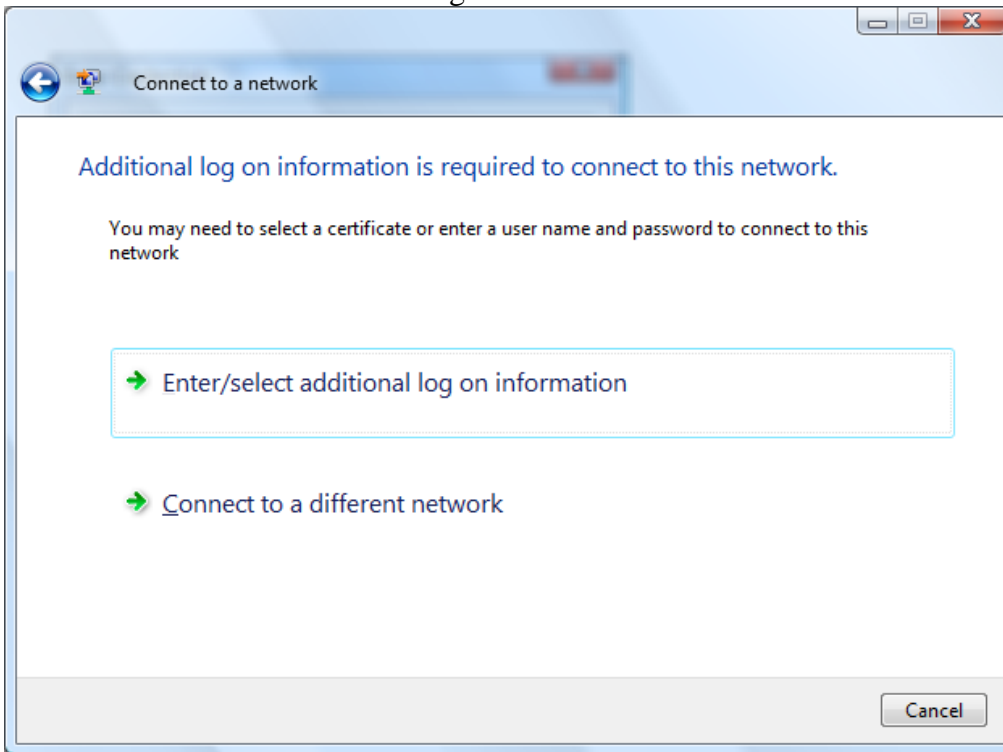
3. When Prompted with Additional log on information is required to connect to this network: Click Enter/Select additional log on information



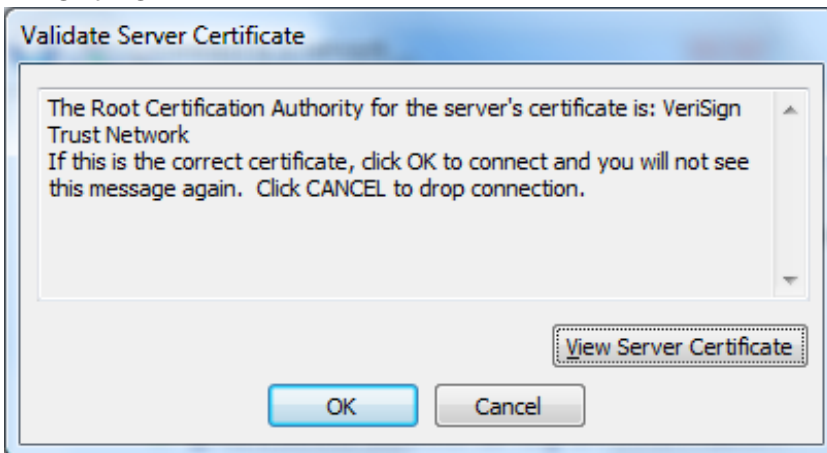
4. Enter your email username and password  
Don't fill in the Logon Domain  
Click OK



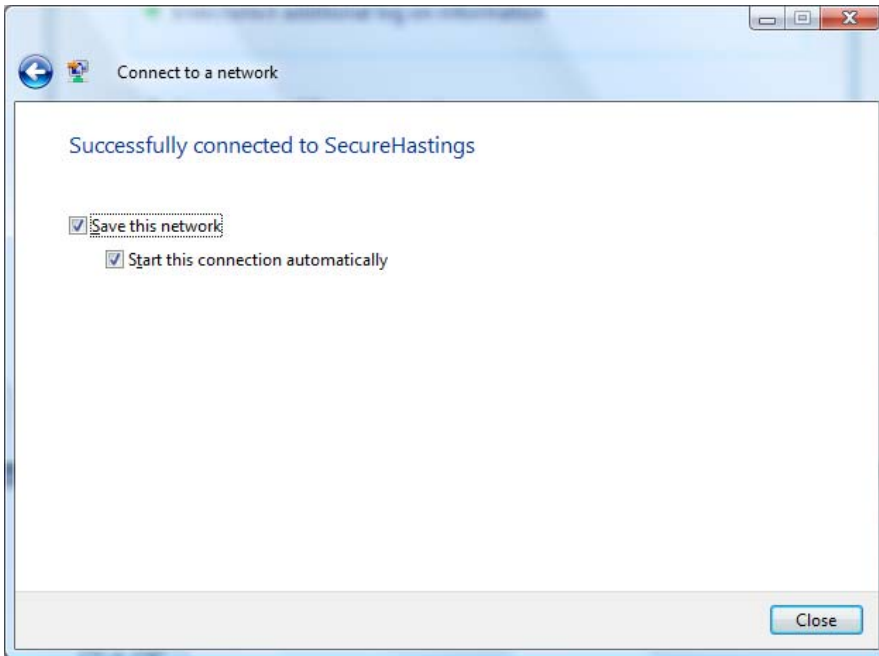
5. You will be prompted a 2<sup>nd</sup> time to enter Additional log on information  
Click Enter/select additional log on information



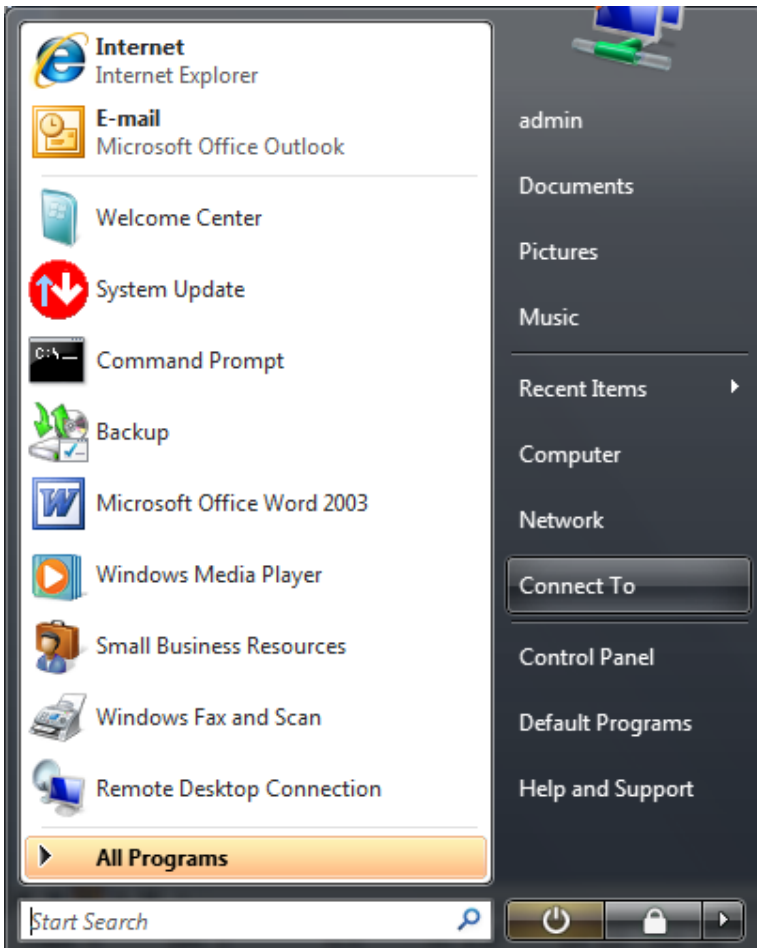
6. You will be prompted to Validate Server Certificate  
Click OK



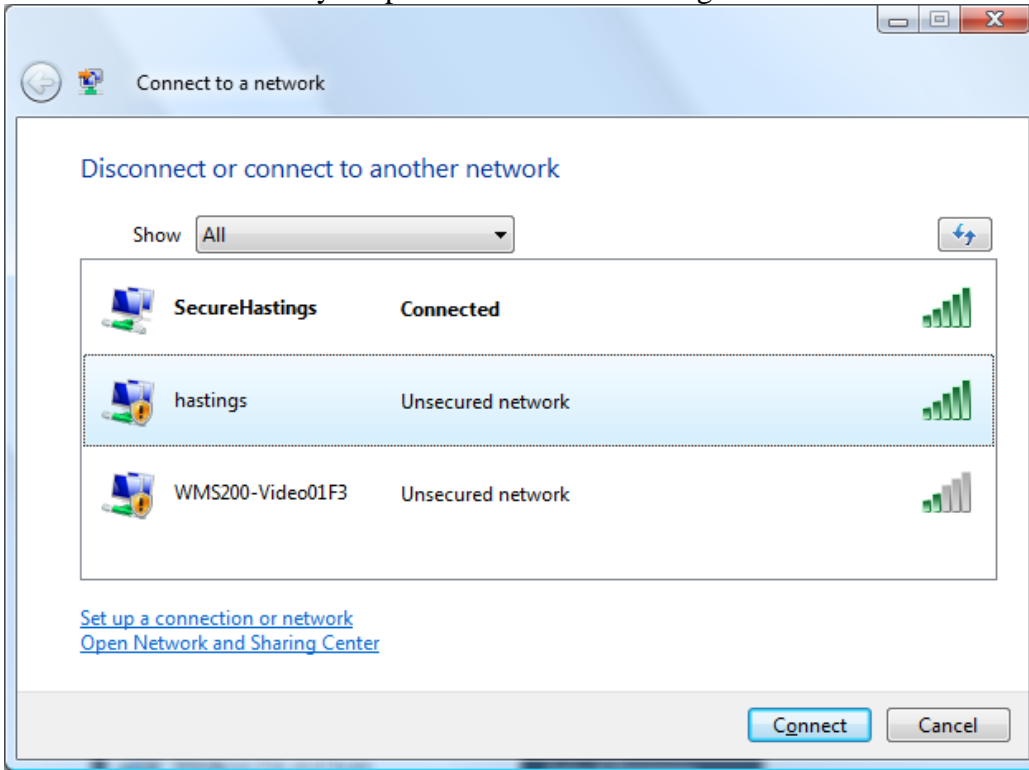
7. You will receive the dialog box: Successfully connected to SecureHastings  
Make sure that the check boxes are checked:  
Save this Network and Start this connection automatically  
Click Close



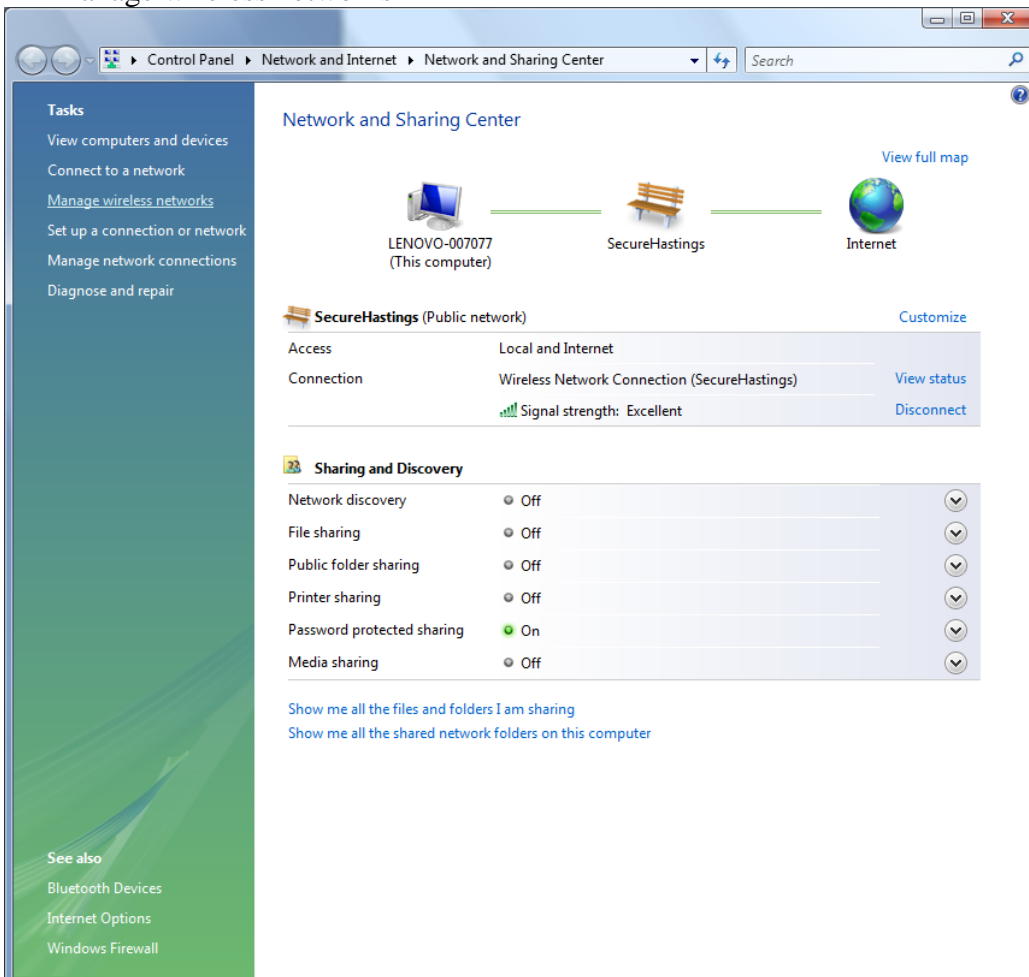
8. Change the wireless network hastings to not: connect automatically when the network is in range  
Click the Start Button then Connect to



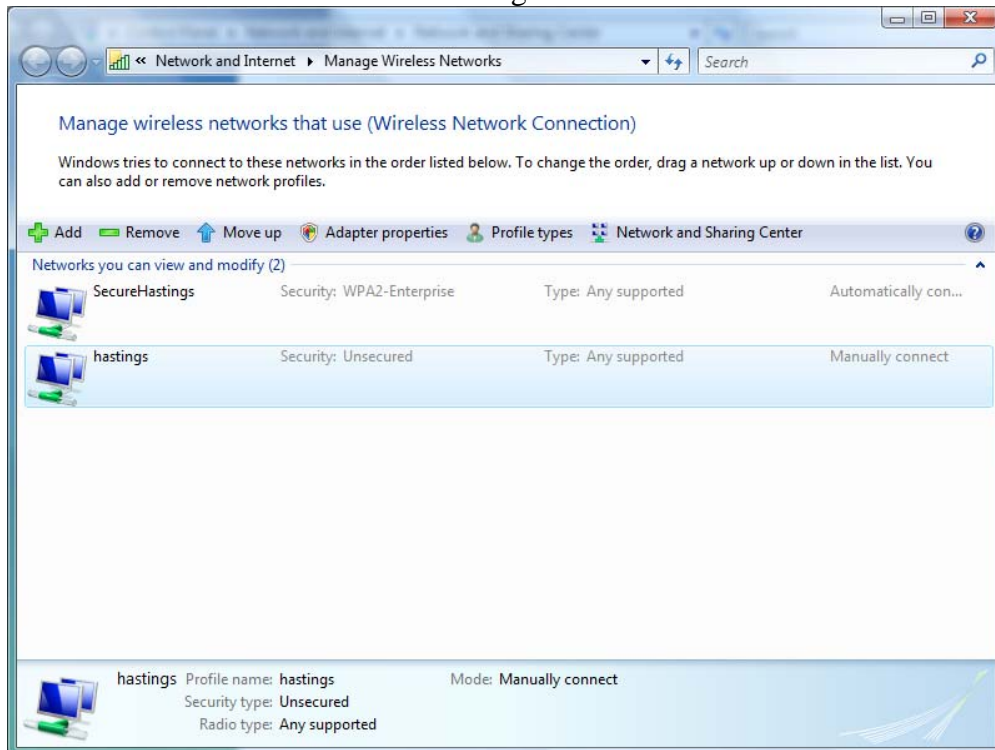
9. Click the link that says: Open Network and Sharing Center



10. Click the link on the left panel that says:  
Manage wireless networks

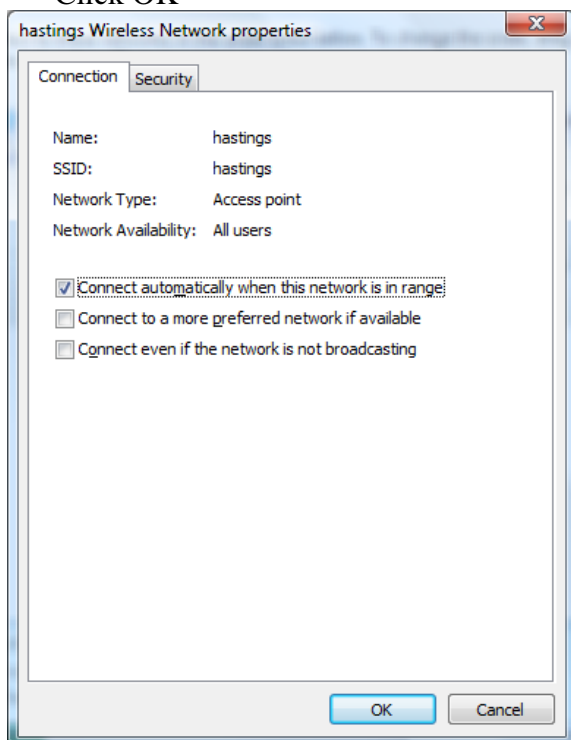


## 11. Double Click on the network hastings



## 12. At the hastings Wireless Network properties

Un-check the box that says: Connect automatically when this network is in range.  
Click OK



After setting up the network SecureHastings you won't be prompted to enter your username and password every time you connect to the wireless network.

If you have any questions email us at: [helpdesk@uchastings.edu](mailto:helpdesk@uchastings.edu)  
or call us at: 415-581-8802